



Thurlow Road NW3

Parkheath  
*Sold on Service*





## Thurlow Road, NW3, Asking Price £1,790,000, Share of Freehold

### Camden Band G

- An exceptional 3 double bedroom, 2 bathroom upper maisonette
- Set in beautifully maintained semi-detached Victorian residence
- 2nd & 3rd floors (top 2), 1867 sq ft approx
- Impressive 38' front to rear double reception
- Separate 13' kitchen/breakfast room
- 16' main bedroom with en suite shower room
- 2 further generous double bedrooms
- Wood flooring, excellent natural light and fireplace
- Share of freehold
- Set in one of Hampstead Villages more sought after addresses

Belsize Park/Hampstead  
208 Haverstock Hill  
NW3 2AG  
Sales 020 7431 1234  
Lettings 020 7431 3104  
[nw3@parkheath.com](mailto:nw3@parkheath.com)

South/West Hampstead  
192 West End Lane  
NW6 1SG  
Sales & Lettings  
Tel 020 7794 7111  
[192@parkheath.com](mailto:192@parkheath.com)

Kensal Rise  
54-56 Chamberlayne Rd  
NW10 3JH  
Tel 020 8960 4845  
[kensal@parkheath.com](mailto:kensal@parkheath.com)

Property Management  
192 West End Lane  
NW6 1SG  
020 7433 6174  
[pm@parkheath.com](mailto:pm@parkheath.com)

**Parkheath**  
*Sold on Service*

[www.parkheath.com](http://www.parkheath.com)

### Thurlow Road

Approximate Gross Internal Area = 173.4 sq m / 1867 sq ft  
(Including Eaves Storage / Void / Attic Storage)

Approximate Gross Internal Area = 162.6 sq m / 1750 sq ft  
(Excluding Eaves Storage / Void / Attic Storage)

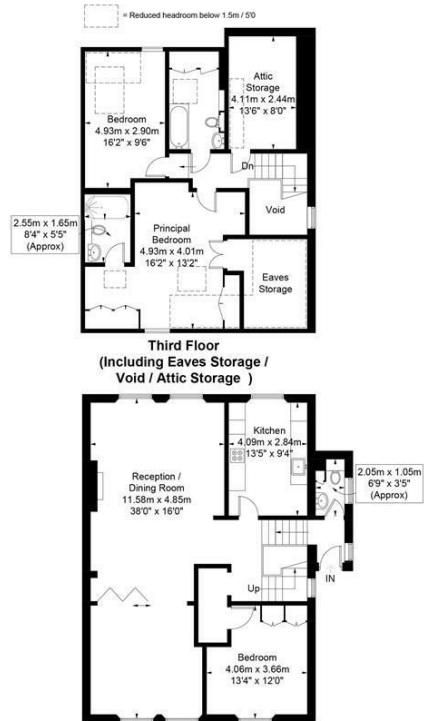
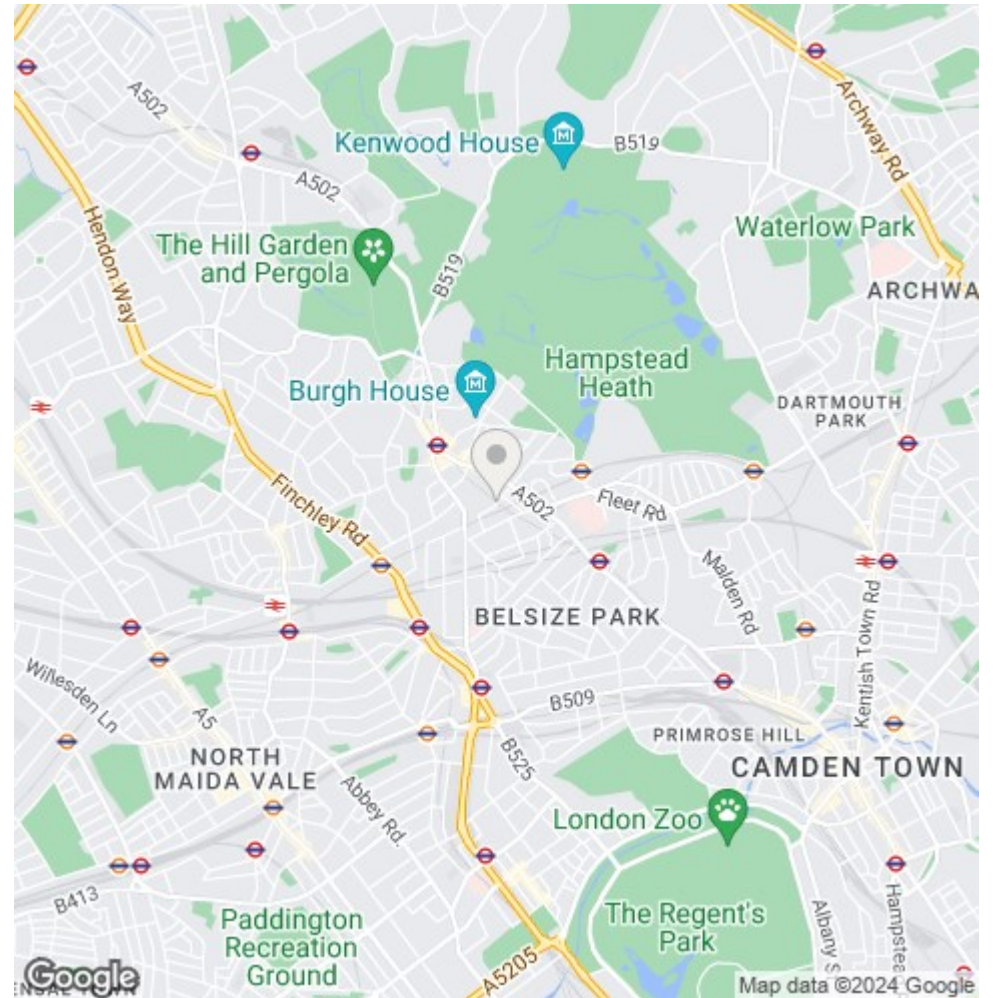


Illustration for identification purposes only, measurements are approximate, not to scale. FloorplansUsketch.com © 2018 (ID428798)  
ELLIE CLAIRE PHOTOGRAPHY LTD



The particulars do not constitute part of an offer or contract. The particulars, including text, photographs and plans, are for the guidance only of prospective purchasers/tenants and must not be relied upon as statements of fact. The descriptions provided therein represent the opinion of the author and whilst given in good faith should not be construed as statements of fact. Nothing in these particulars shall be deemed a statement that the property is in good condition or otherwise or that any services or facilities are in good working order. All measurements are approximate